

Project overview

February 2006

UMCOR/DRC is currently implementing a third phase of food security program financed by USAID/OFDA in the territories of Pweto and Moba. As a part of the interaction within these communities, a lot of physically challenged individuals were identified. In all cases they are immobile. The lack of equipment that could make their lives more productive and wholesome is among the several reasons for destitution among the physically challenged individuals identified.

The New life center of the United Methodist Church in Kitwe Zambia had donated two tricycles in 2004 for the handicapped in the region and the results were amazing for the beneficiaries. From observations the quality of their lives improved tremendously. This created an unexpected demand for similar assistance.

The tricycle is a three tyre vehicle with a paddle that can be operated with the hands it allows the individual to be mobile from one place to another.

Based on a request, the center committed itself to provide 50 new chairs to beneficiaries in the Pweto area. The chairs are to be donated free of charge but UMCOR must assume the responsibility to transport the chairs to the beneficiaries.

The chairs are to allow beneficiaries to go to church and other social gatherings and especially to visit the market. This will also encourage younger physically challenged individuals to attend school and enable them to travel to local health centers for medical care.

The initiative is supposed to allow the families and individuals to pursue independent lifestyles.

Project goal

To provide physical mobility to fifty physically challenged individuals through the provision of specially designed tricycles. This is designed to improve and enhance the quality of their lives.

Project objectives

The following activities were undertaken to achieve the goal outlined.

- UMCOR extension agents/ agronomists will identify the most physically challenged individuals in the communities to be targeted for assistance
- UMCOR will transport the equipment from the New Life Center In Kitwe, Zambia to Pweto in the DRC
- Basic orientation will be held in the use of the equipment and its maintenance
- Distribution will be dependent on the capacity of the beneficiaries to use the equipment younger beneficiaries with possibility of attending school will have priority
- Monitoring will be conducted for reporting purposes to the New Life Center

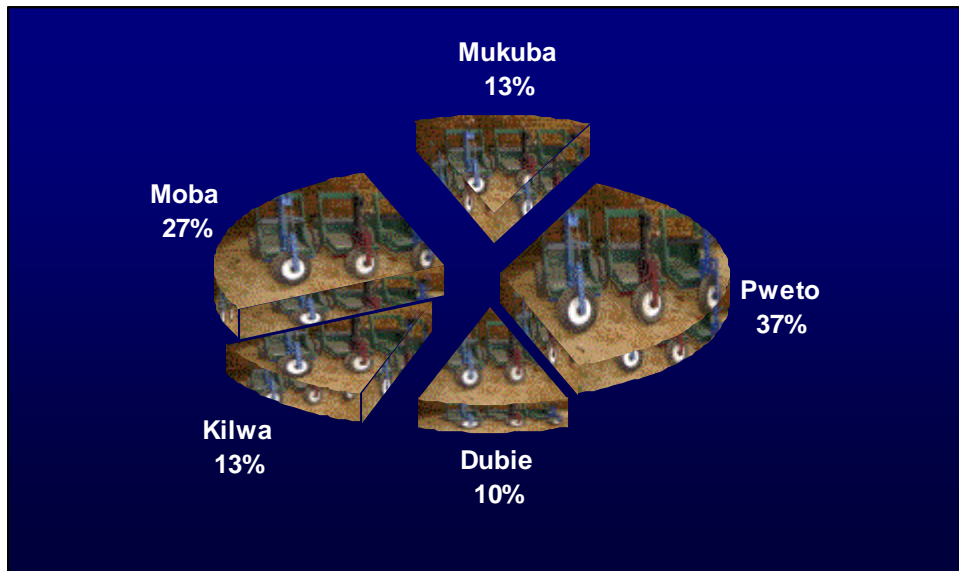
Identification of physically challenged individuals

An initial invitation was sent out to all physically challenged persons in the Pweto, Kilwa, Kamusolo, Dubie and Moba (Moba comprises of Moba port, Kirungu) for a meeting. Ranking was principally used to select beneficiaries. The handicapped were asked to assess the difficulty of each other in terms of mobility and to rank those who needed most an assistance. A list was obtained and beneficiaries for the intervention were selected based on this list. Preference was given to all individual at school going age and were in school

This methodology was used because it was evident that the tricycles due to be received would not suffice for the number of physically challenged person identified in the zone of operation.

The pie chart below illustrates the percentage of the total of the 48 physically challenged persons selected from each community.

Figure # 1 Percentage of wheel chairs distributed per community or percentage of beneficiaries per community



Project Beneficiaries

Although 50 beneficiaries were target, 49 wheel chairs were received out of which one had a wheel completely destroyed due to transport. The beneficiaries of this intervention were 48 physically challenged individuals within the territories of Pweto and of Moba.

Although the original project design was for the territory of Pweto. Moba had to be included in view of the fact that several physically challenged in Moba had also contacted program management for the provision of wheel chairs as they were informed the UMCOR was providing wheels chairs for physically challenged individuals in Pweto.

Beneficiaries include men, women and young children in the communities of Pweto, Kilwa, Kamusolo, Mukuba, Dubie and Moba.

Sex Distribution of beneficiaries of wheel chairs

Table # 1 Sex distribution of beneficiaries

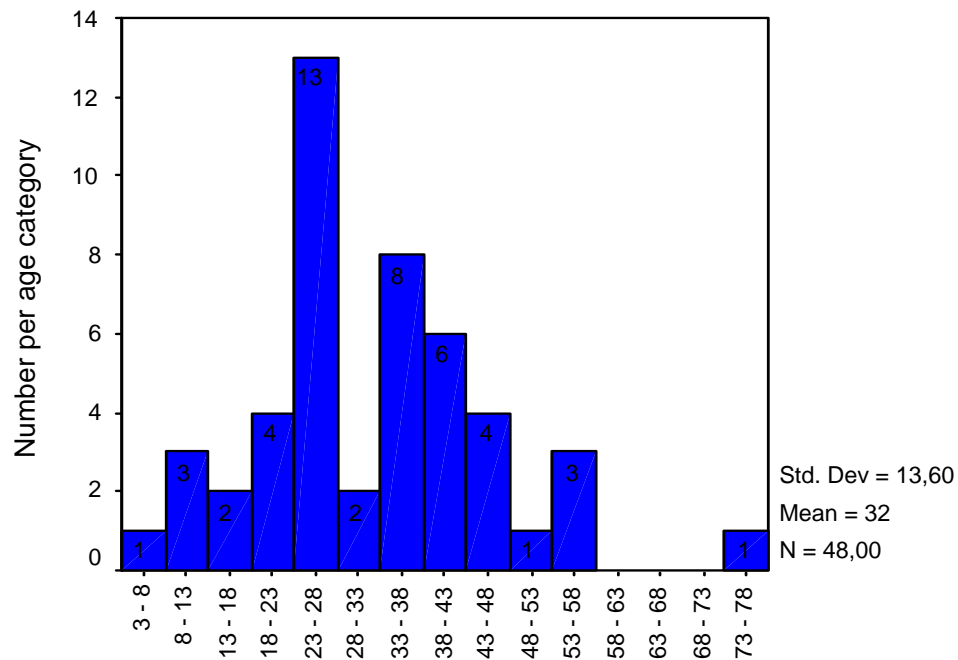
Sex	Frequency	Percent
Female	18	37,5
Male	30	62,5
Total	48	100

Out of the 48 beneficiaries identified and selected, 18 of them were females as shown by the table above

Age distribution of beneficiaries

The histogram below illustrates the age distribution of beneficiaries of the wheel chairs. The mean age is 32 years implying beneficiaries belong to the economically active group of the communities but had to depend on relatives due to lack of mobility.

Figure # 2 Age distribution of beneficiaries



Age distribution of physically challenged selected

Income generating activity of beneficiaries before intervention

Majority of the beneficiaries are unemployed due to the problems they face in terms of mobility. The table # 2 below illustrates the various income generating activities undertaken by the beneficiaries.

Table# 2 Income generating activities of beneficiaries before the intervention

Income generating activity	Frequency	Percent
Cobbler	2	4,2
Farmer	6	12,5
Iron smith	2	4,2
Pastor	1	2,1
Pupil	7	14,6
Tailor	2	4,2
Teacher	2	4,2
Trader	8	16,7
Unemployed	18	37,5
Total	48	100

Transport of Equipment

Wheel chairs donated were transported from Kitwe which is about 620Km from Pweto in two consignments due to the fact that there was a little delay in the manufacture of the wheel chairs.

The first consignment included 25 wheel chairs, a second consignment of 24 wheel chairs with a set of accessories in each case.



49 P.E.Ts (wheel chairs) and 49 sets of accessories were received as illustrated below

- 49 P.E.Ts
- 49 Foot Pumps
- 49 ½ inch wrenches
- 49 7/16 inch wrenches
- 49 Pliers
- 49 Star Screw drivers
- 49 Oil cans (with oil)
- 49 Patch kits



Wheel chairs and accessories ready for distribution

Transport from Pweto to the various sub offices was done by UMCOR pick up trucks except for Kilwa which was done aboard the barge owned by Anvil Mining company from Nchelenge in Zambia.

The pictures below illustrate the wheel chairs and accessories received



Wheel chairs donated



Accessories donated with wheel chairs



Gift of New Life Center care of UMCOR

Basic orientation on equipment use and maintenance

Beneficiaries were taken through an orientation on the use of the wheel chairs and the maintenance. The following areas were covered during the orientation

- The use of a wheel chair
- Tyre pressure and the use of the foot pumps
- Oiling of wheel chair chain and other moving parts
- Adjusting wheel chair chain length
- General maintenance

The pictures below illustrate the orientation given to beneficiaries



Quick survey of the impact of the intervention on some beneficiaries

Pastor Senga Nyembo was paralyzed from childhood due to poliomyelitis. Although he is physically challenged this does not deter him from leading some members so his community in Moba port in their local church. Members of his church informed him about the initiative and fortunately he was selected as a beneficiary

According to him, “this is the greatest miracle in my life, I never thought I would ever have anything like this to help me go to church on Sunday mornings especially after the rains or visit members of my church. I am so happy and God bless you.”



Pastor Senga as he came to receive his wheel chair



Pastor Senga surrounded by member of his congregation

Two other beneficiaries in Pweto have begun with petty trading after the intervention. They go into Zambia to buy kerosene in gallons, which they carry at the back of their wheel chairs. In the evenings they go from door to door to sell to people living in Pweto since kerosene is the major source of energy for lighting their homes. According to them we are simply making ends meet due to the wheel chairs.

Beneficiaries who are in school have also said they will not have to depend on other relatives before going to school in the morning or worry about the rains.

Monitoring of equipment donated

Agronomists /Extension staff living in the various localities where wheel chairs were distributed are to pay regular visit to beneficiaries to help in case there are difficulties and also to make sure that items donated are not sold. This will help to constantly inform the New Life Center on the items donated.

Conclusion

The items donated will have a lasting impact on the beneficiaries; it was highly appreciated by local authorities and other members of the communities. The needs for this equipment still exist in the communities. It can be estimated that the current project has only reached about 25 percent of physically challenged individuals in the communities where distribution was made.